

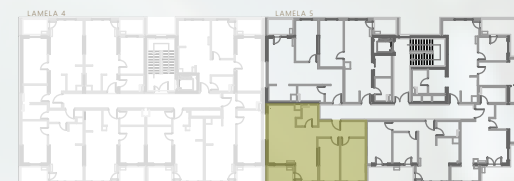


SITUACIJA Site plan



POZICIJA STANA Unit location

etaže I, II, III, IV, V



STAN BR. UNIT NO.
S06, S12, S18, S24, S30

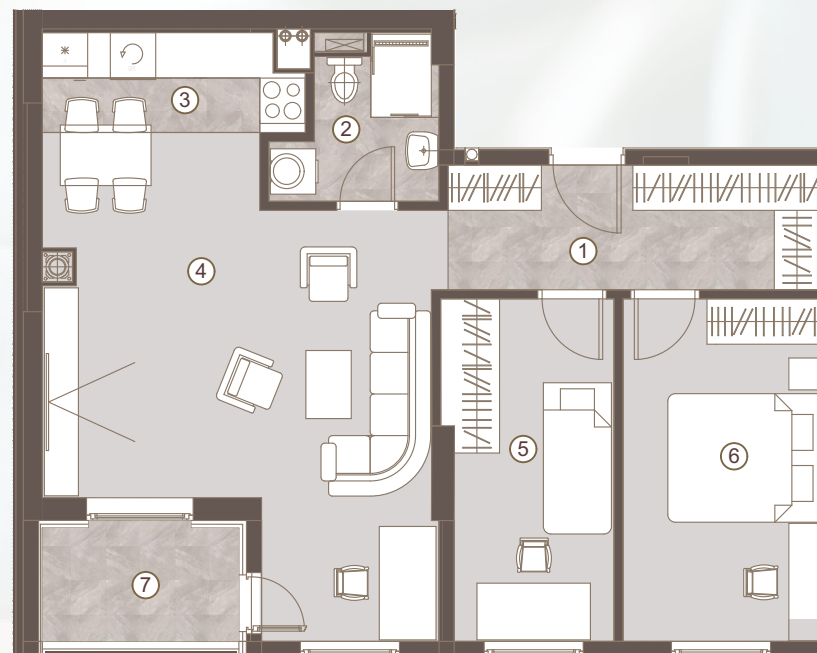
TROSOBAN STAN/ TWO BEDROOM UNIT

1 predulaz:	07.87 m ²
2 kupatilo:	03.76 m ²
3 kuhinja:	04.23 m ²
4 boravak i trpezarija:	26.14 m ²
5 dječija soba:	09.57 m ²
6 spavaća soba:	11.42 m ²

Površina stana: 62.99 m²

Površina lođe 7: 03.17 m²

Ukupna površina: 66.16 m²



Napomena: Sve dimenzije, površine i grafički prikazi su informativnog karaktera i mogu podlijegati manjim odstupanjima. Površine su obračunate prema glavnom projektu.

Disclaimer: Displayed dimensions, areas, and graphic representations are for informational purposes only and may be subject to minor variations. Floor areas are calculated in accordance with the main project.

