

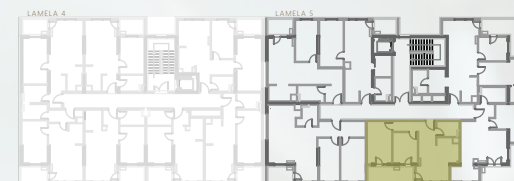


## SITUACIJA Site plan



## POZICIJA STANA Unit location

etaže I, II, III, IV, V



STAN BR. UNIT NO.  
S05, S11, S17, S23, S29

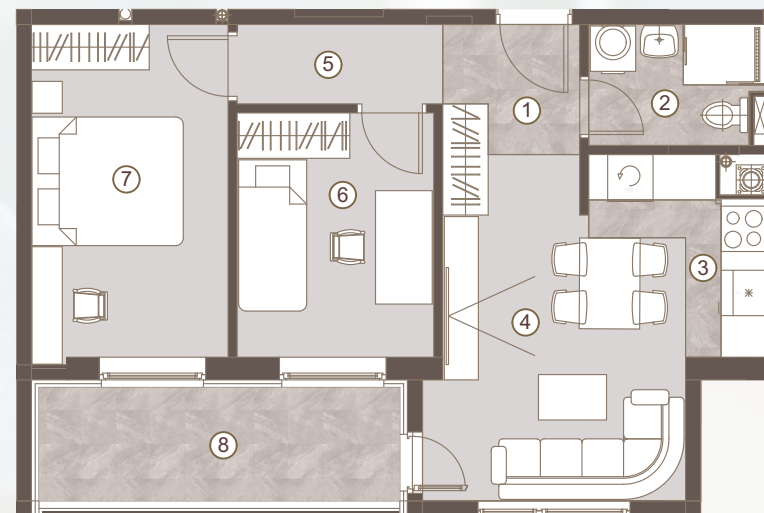
TROSOBAN STAN/  
TWO BEDROOM UNIT

1 predulaz:	03.01 m <sup>2</sup>
2 kupatilo:	03.47 m <sup>2</sup>
3 kuhinja:	03.76 m <sup>2</sup>
4 boravak i trpezarija:	13.21 m <sup>2</sup>
5 degažman:	02.76 m <sup>2</sup>
6 dječija soba:	08.14 m <sup>2</sup>
7 spavaća soba:	11.14 m <sup>2</sup>

Površina stana: 45.49 m<sup>2</sup>

Površina lođe 8: 05.78 m<sup>2</sup>

**Ukupna površina: 51.27 m<sup>2</sup>**



Napomena: Sve dimenzije, površine i grafički prikazi su informativnog karaktera i mogu podlijegati manjim odstupanjima. Površine su obračunate prema glavnom projektu.

Disclaimer: Displayed dimensions, areas, and graphic representations are for informational purposes only and may be subject to minor variations. Floor areas are calculated in accordance with the main project.

