

CITY GARDEN

RESIDENCE

ALEGRA

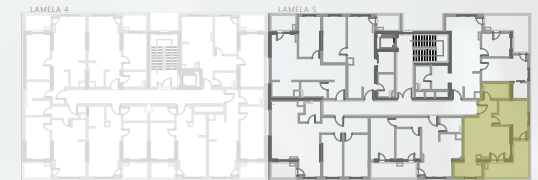
LAMELA 5

SITUACIJA Site plan



POZICIJA STANA Unit location

etaže I, II, III, IV, V, VI



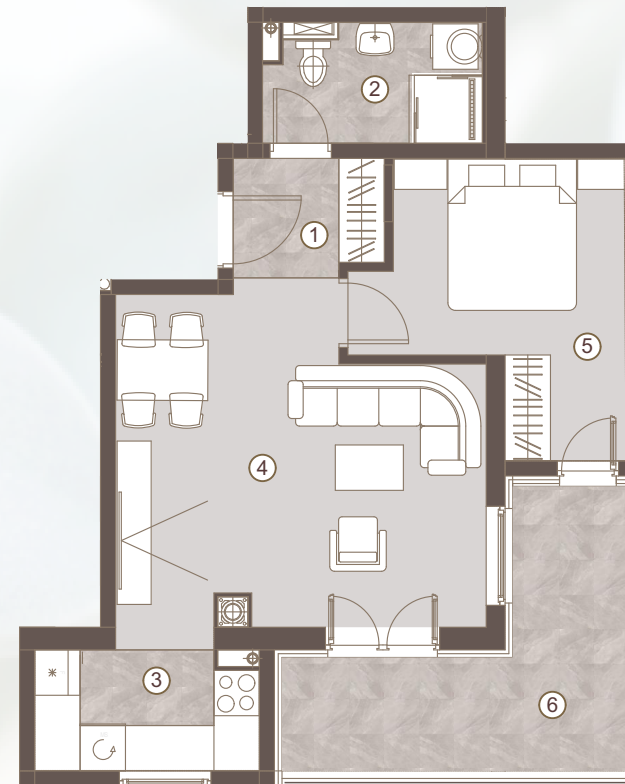
STAN BR. UNIT NO.
S04, S10, S16, S22, S28, S34

DVOSOBAN STAN/
ONE BEDROOM UNIT

1 predulaz:	02.95 m ²
2 kupatilo:	04.37 m ²
3 kuhinja:	04.44 m ²
4 boravak i trpezarija:	19.60 m ²
5 spavaća soba:	10.57 m ²

Površina stana:	41.93 m ²
Površina lođe 6:	08.48 m ²

Ukupna površina: 50.41 m²



Napomena: Sve dimenzije, površine i grafički prikazi su informativnog karaktera i mogu podlijegati manjim odstupanjima. Površine su obračunate prema glavnom projektu.

Disclaimer: Displayed dimensions, areas, and graphic representations are for informational purposes only and may be subject to minor variations. Floor areas are calculated in accordance with the main project.

