

CITY GARDEN

RESIDENCE

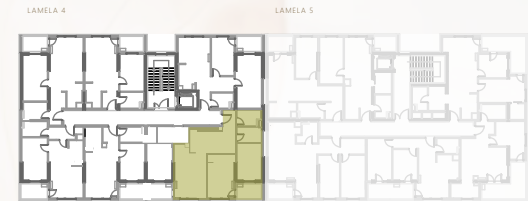
VIVA
LAMELA 4

SITUACIJA Site plan



POZICIJA STANA Unit location

etaže IV, V



STAN BR. UNIT NO.
S30, S36

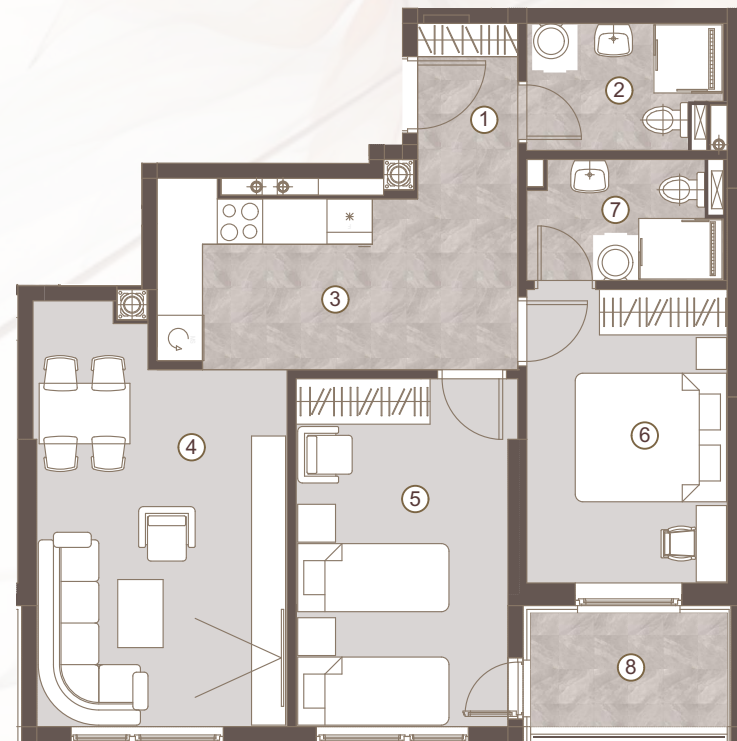
TROSOBAN STAN/
TWO BEDROOM UNIT

1 predulaz:	05.88 m ²
2 kupatilo:	03.89 m ²
3 kuhinja:	07.68 m ²
4 boravak i trpezarija:	16.40 m ²
5 dječija soba:	12.10 m ²
6 spavaća soba:	09.97 m ²
7 kupatilo:	03.75 m ²

Površina stana: 59.68 m²

Površina lođe 8: 03.17 m²

Ukupna površina: 62.85 m²



Napomena: Sve dimenzije, površine i grafički prikazi su informativnog karaktera i mogu podlijegati manjim odstupanjima. Površine su obračunate prema glavnom projektu.

Disclaimer: Displayed dimensions, areas, and graphic representations are for informational purposes only and may be subject to minor variations. Floor areas are calculated in accordance with the main project.

