

# CITY GARDEN

RESIDENCE

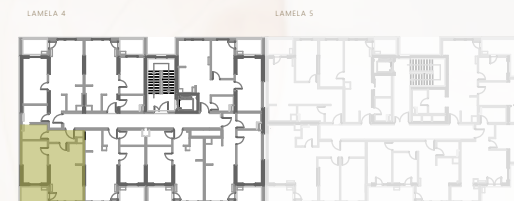
VIVA  
LAMELA 4

## SITUACIJA Site plan



## POZICIJA STANA Unit location

etaže I, II, III, IV, V



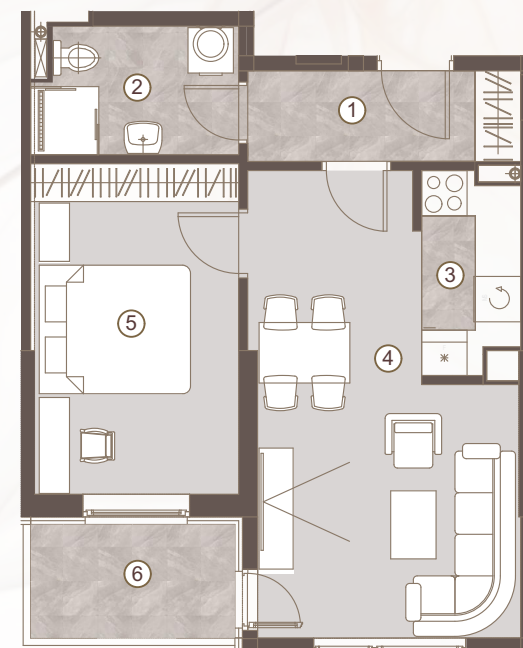
STAN BR. UNIT NO.  
S12, S19, S26, S32, S38

DVOSOBAN STAN/  
ONE BEDROOM UNIT

1 predulaz:	04.19 m <sup>2</sup>
2 kupatilo:	04.33 m <sup>2</sup>
3 kuhinja:	03.13 m <sup>2</sup>
4 boravak i trpezarija:	17.44 m <sup>2</sup>
5 spavaća soba:	11.56 m <sup>2</sup>

Površina stana:	40.65 m <sup>2</sup>
Površina lođe 6:	03.40 m <sup>2</sup>

**Ukupna površina: 44.05 m<sup>2</sup>**



Napomena: Sve dimenzije, površine i grafički prikazi su informativnog karaktera i mogu podlijegati manjim odstupanjima. Površine su obračunate prema glavnom projektu.

Disclaimer: Displayed dimensions, areas, and graphic representations are for informational purposes only and may be subject to minor variations. Floor areas are calculated in accordance with the main project.

