

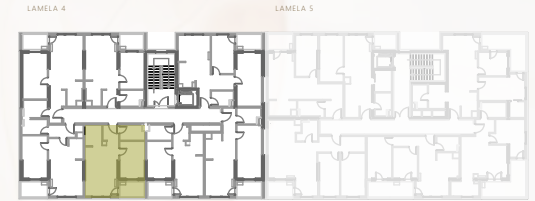


SITUACIJA Site plan



POZICIJA STANA Unit location

etaže I, II, III,



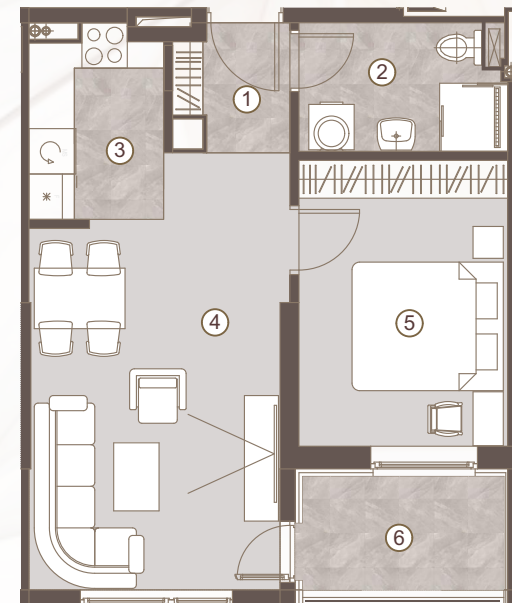
STAN BR. UNIT NO.
S11, S18, S25

DVOSOBAN STAN/
ONE BEDROOM UNIT

1 predulaz:	04.19 m ²
2 kupatilo:	04.33 m ²
3 kuhinja:	03.13 m ²
4 boravak i trpezarija:	17.44 m ²
5 spavaća soba:	11.56 m ²

Površina stana:	40.65 m ²
Površina lođe 6:	03.40 m ²

Ukupna površina: 44.05 m²



Napomena: Sve dimenzije, površine i grafički prikazi su informativnog karaktera i mogu podlijegati manjim odstupanjima. Površine su obračunate prema glavnom projektu.

Disclaimer: Displayed dimensions, areas, and graphic representations are for informational purposes only and may be subject to minor variations. Floor areas are calculated in accordance with the main project.

