

CITY GARDEN

RESIDENCE

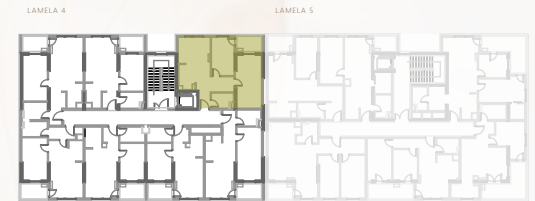
VIVA
LAMELA 4

SITUACIJA Site plan



POZICIJA STANA Unit location

etaže I, II, III, IV, V, VI, VII



STAN BR. UNIT NO.
S08, S15, S22, S29, S35, S41, S46

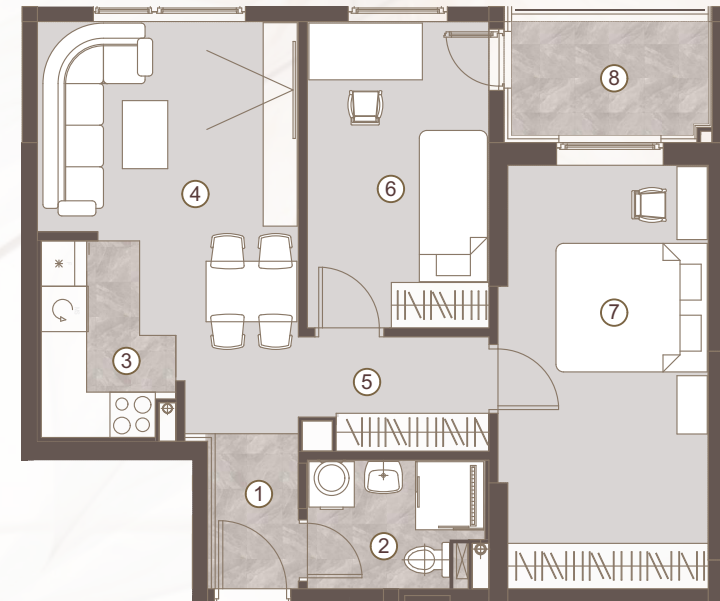
TROSOBAN STAN/ TWO BEDROOM UNIT

1 predulaz:	02.26 m ²
2 kupatilo:	03.56 m ²
3 kuhinja:	03.76 m ²
4 boravak i trpezarija:	14.26 m ²
5 degažman:	10.18 m ²
6 dječija soba:	09.43 m ²
7 spavaća soba:	14.71 m ²

Površina stana: 51.44 m²

Površina lođe 8: 03.15 m²

Ukupna površina: 54.59 m²



Napomena: Sve dimenzije, površine i grafički prikazi su informativnog karaktera i mogu podlijegati manjim odstupanjima. Površine su obračunate prema glavnom projektu.

Disclaimer: Displayed dimensions, areas, and graphic representations are for informational purposes only and may be subject to minor variations. Floor areas are calculated in accordance with the main project.

