

# CITY GARDEN

RESIDENCE

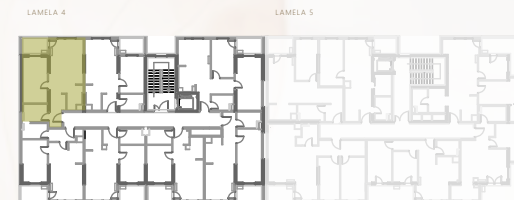
VIVA  
LAMELA 4

## SITUACIJA Site plan



## POZICIJA STANA Unit location

etaže I, II, III, IV, V, VI, VII



STAN BR. UNIT NO.

S06, S13, S20, S27, S33, S39, S44

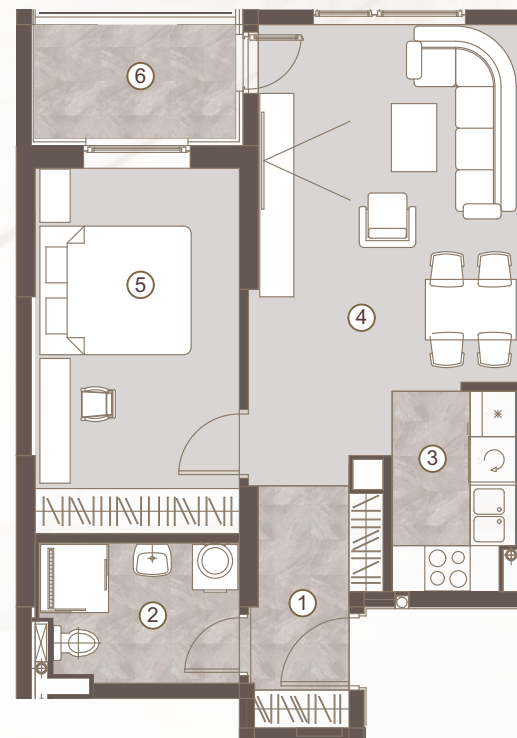
DVOSOBAN STAN/  
ONE BEDROOM UNIT

|                         |                      |
|-------------------------|----------------------|
| 1 predulaz:             | 04.44 m <sup>2</sup> |
| 2 kupatilo:             | 04.55 m <sup>2</sup> |
| 3 kuhinja:              | 04.03 m <sup>2</sup> |
| 4 boravak i trpezarija: | 18.47 m <sup>2</sup> |
| 5 spavaća soba:         | 12.77 m <sup>2</sup> |

Površina stana: 44.25 m<sup>2</sup>

Površina lođe 6: 03.14 m<sup>2</sup>

**Ukupna površina: 47.39m<sup>2</sup>**



Napomena: Sve dimenzije, površine i grafički prikazi su informativnog karaktera i mogu podlijevati manjim odstupanjima. Površine su obračunate prema glavnom projektu.

Disclaimer: Displayed dimensions, areas, and graphic representations are for informational purposes only and may be subject to minor variations. Floor areas are calculated in accordance with the main project.

