

CITY GARDEN

RESIDENCE

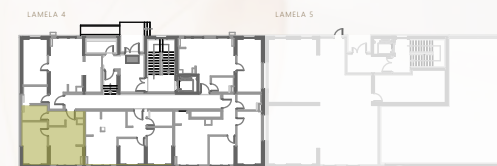
VIVA
LAMELA 4

SITUACIJA Site plan



POZICIJA STANA Unit location

prizemna etaža



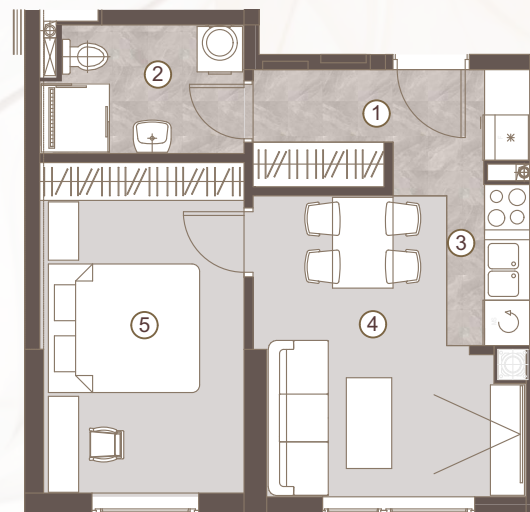
STAN BR. UNIT NO.

S05

DVOSOBAN STAN/
ONE BEDROOM UNIT

1 predulaz:	03.86 m ²
2 kupatilo:	04.24 m ²
3 kuhinja:	03.70 m ²
4 boravak i trpezarija:	11.34 m ²
5 spavaća soba:	11.35 m ²

Ukupna površina: 34.48 m²



Napomena: Sve dimenzije, površine i grafički prikazi su informativnog karaktera i mogu podlijegati manjim odstupanjima. Površine su obračunate prema glavnom projektu.

Disclaimer: Displayed dimensions, areas, and graphic representations are for informational purposes only and may be subject to minor variations. Floor areas are calculated in accordance with the main project.

