

CITY GARDEN

RESIDENCE

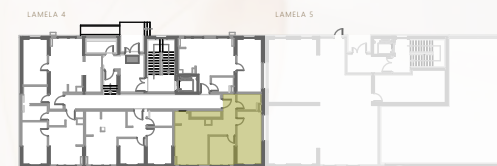
VIVA
LAMELA 4

SITUACIJA Site plan



POZICIJA STANA Unit location

prizemna etaža



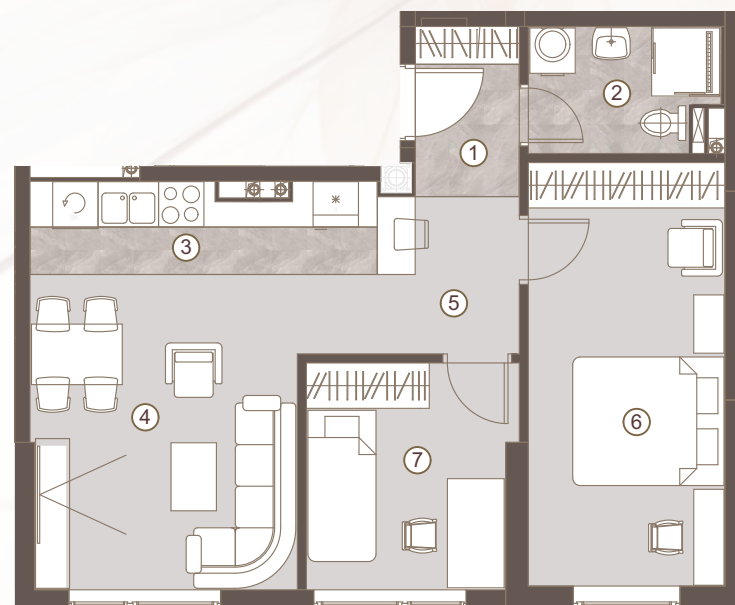
STAN BR. UNIT NO.

S03

TROSOBAN STAN/
TWO BEDROOM UNIT

1 predulaz:	03.00 m ²
2 kupatilo:	03.84 m ²
3 kuhinja:	05.48 m ²
4 boravak i trpezarija:	15.28 m ²
5 degažman:	03.78 m ²
6 spavaća soba:	14.12 m ²
7 dječija soba:	07.85 m ²

Ukupna površina: 53.33 m²



Napomena: Sve dimenzije, površine i grafički prikazi su informativnog karaktera i mogu podlijevati manjim odstupanjima. Površine su obračunate prema glavnom projektu.

Disclaimer: Displayed dimensions, areas, and graphic representations are for informational purposes only and may be subject to minor variations. Floor areas are calculated in accordance with the main project.

