

CITY GARDEN

RESIDENCE

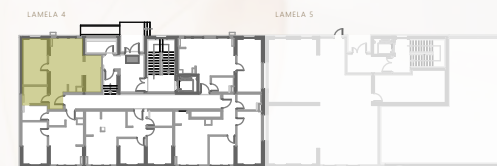
VIVA
LAMELA 4

SITUACIJA Site plan



POZICIJA STANA Unit location

prizemna etaža

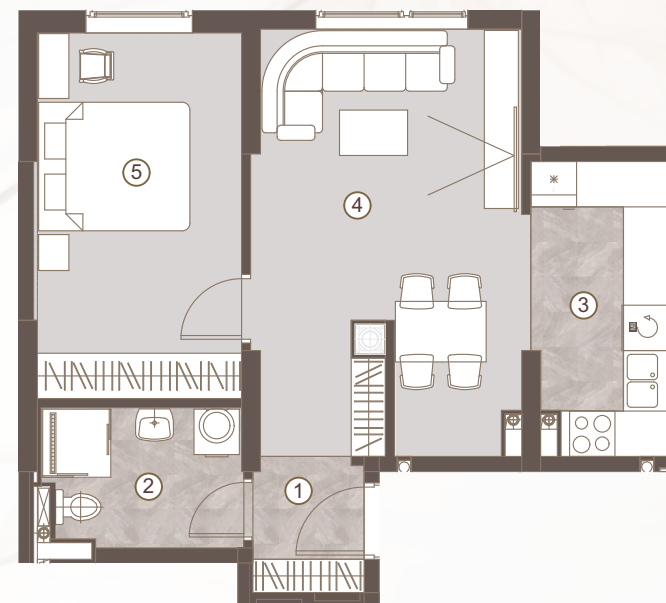


STAN BR. UNIT NO.

S01

DVOSOBAN STAN/
ONE BEDROOM UNIT

1 predulaz:	02.52 m ²
2 kupatilo:	04.59 m ²
3 kuhinja:	06.56 m ²
4 boravak i trpezarija:	18.87 m ²
5 spavaća soba:	12.75 m ²



Ukupna površina: 45.28 m²

Napomena: Sve dimenzije, površine i grafički prikazi su informativnog karaktera i mogu podlijegati manjim odstupanjima. Površine su obračunate prema glavnom projektu.

Disclaimer: Displayed dimensions, areas, and graphic representations are for informational purposes only and may be subject to minor variations. Floor areas are calculated in accordance with the main project.

